



## 28 Maypole Road

Gravesend DA12 2LP

**Offers Around £180,000**



### NO FORWARD CHAIN

Situated in Maypole Road in Gravesend, this delightful one-bedroom ground floor maisonette offers a perfect blend of modern living and convenience. Spanning an area of 538 square feet, the property features a well-appointed double bedroom, a contemporary kitchen installed in 2025, and a spacious lounge/diner that provides an inviting space for relaxation and entertainment.

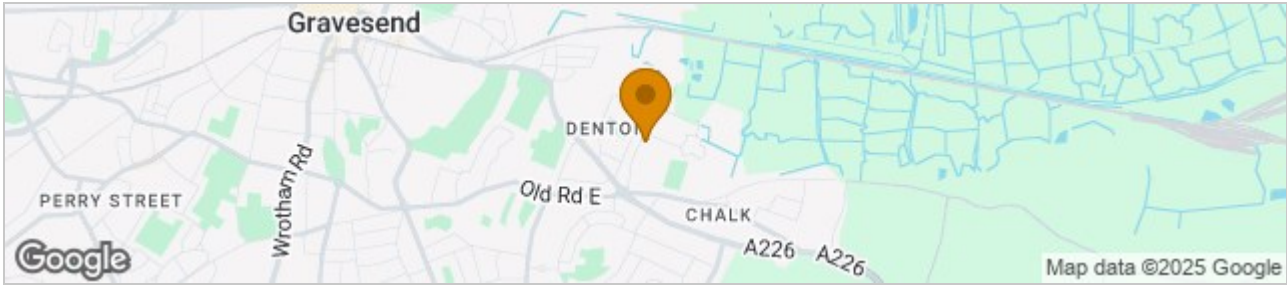
The maisonette boasts a nicely sized decked garden, ideal for enjoying the outdoors, with the added benefit of rear access. This outdoor space is perfect for those who appreciate a touch of nature right at their doorstep. Additionally, the property includes allocated parking for one vehicle, ensuring that you will never have to worry about finding a space.

With an Energy Performance Certificate (EPC) rating of D and a council tax band of B, this home is not only comfortable but also efficient. Its location is particularly advantageous, being just a short drive away from Gravesend train station and the bustling town centre, making it an excellent choice for commuters and those who enjoy local amenities.

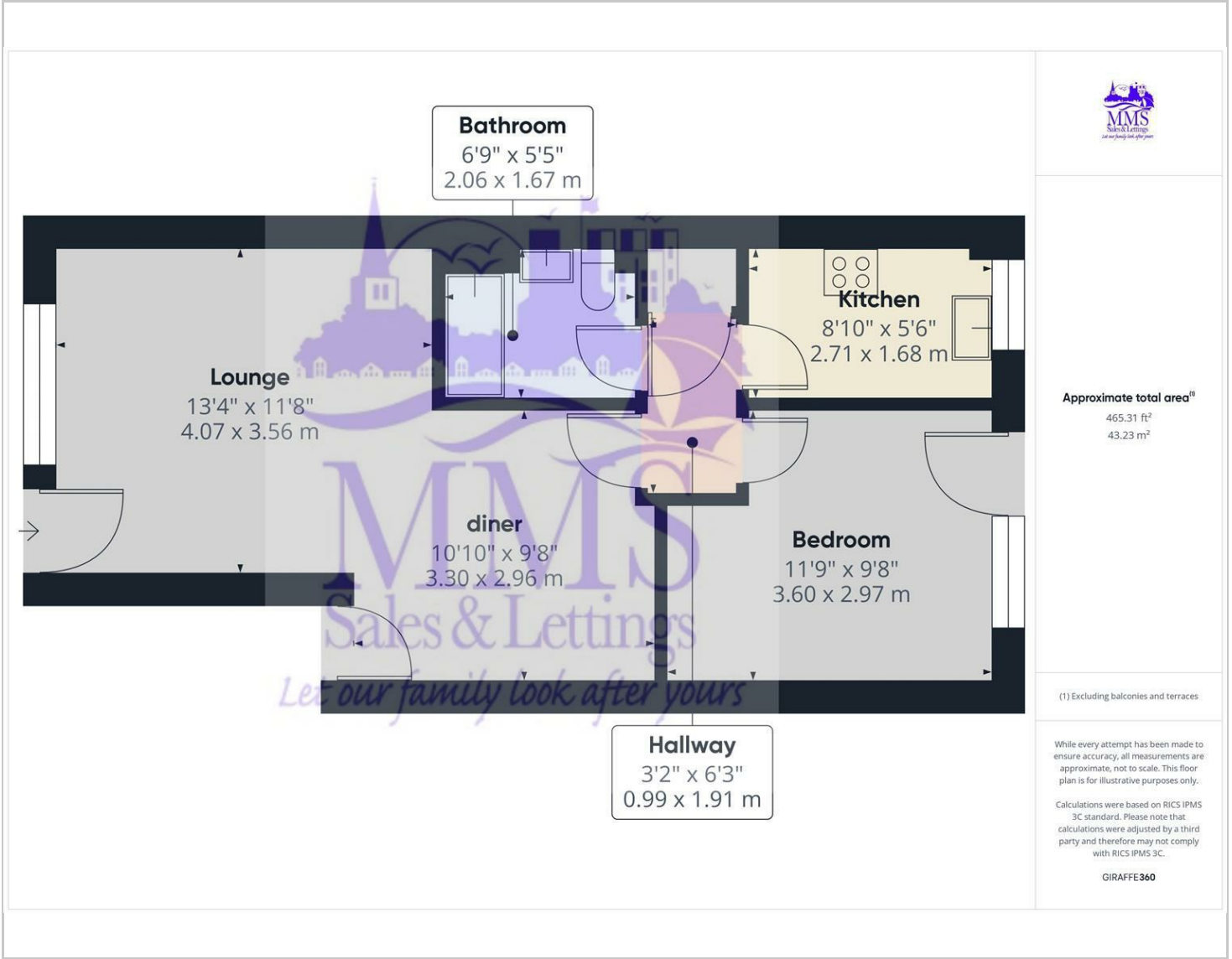
This maisonette presents a wonderful opportunity for first-time buyers or those looking to downsize, offering a modern lifestyle in a convenient setting. Do not miss the chance to make this charming property your new home.



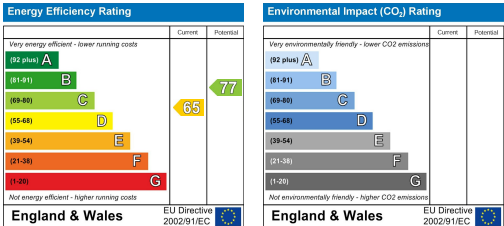
## Area Map



## Floor Plans



## Energy Efficiency Graph



These particulars, whilst believed to be accurate are set out as a general outline only for guidance and do not constitute any part of an offer or contract. Intending purchasers should not rely on them as statements of representation of fact, but must satisfy themselves by inspection or otherwise as to their accuracy. No person in this firm's employment has the authority to make or give any representation or warranty in respect of the property.